

13HK

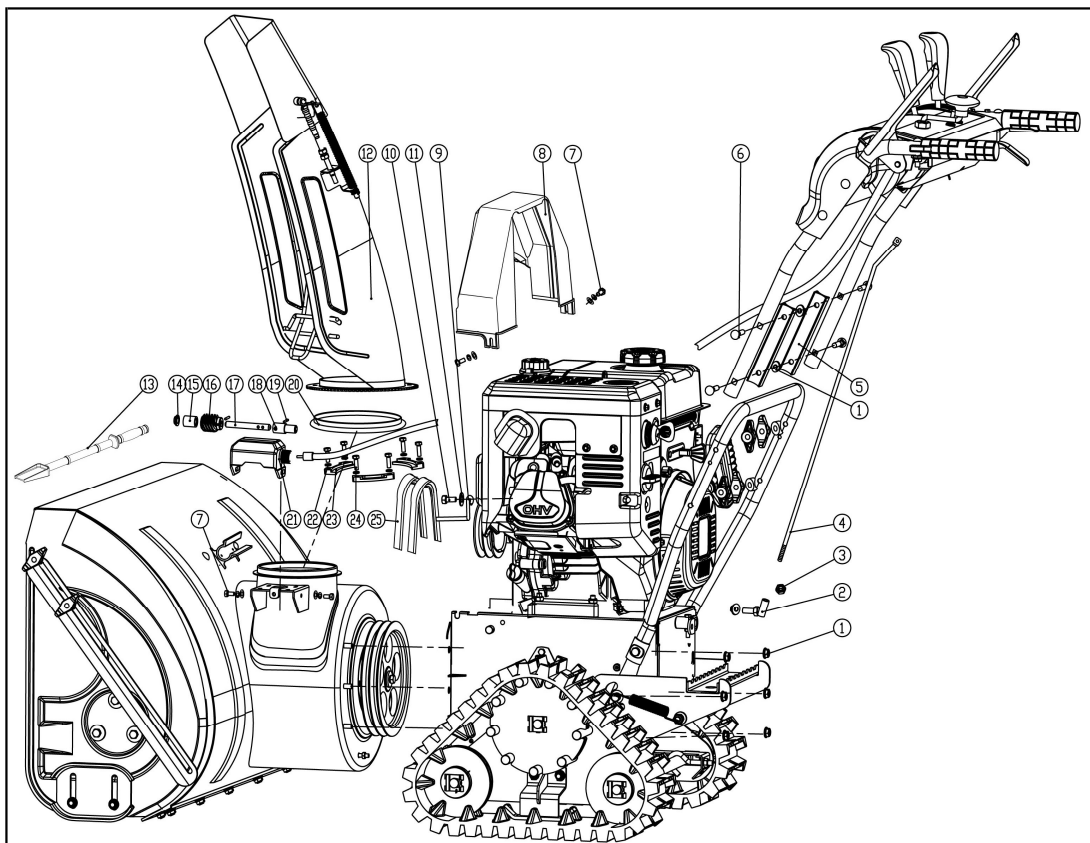


 **Loncin**

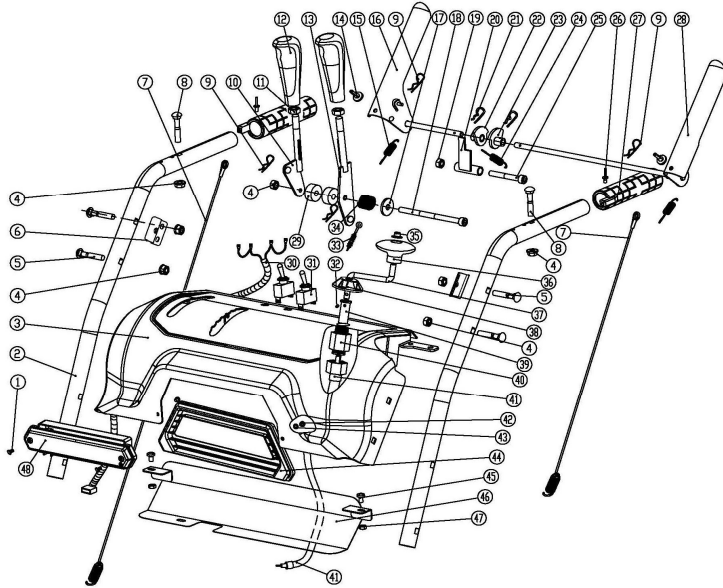
 **GARDENPRO**®

GardenPro Årsmode11 2013-2016

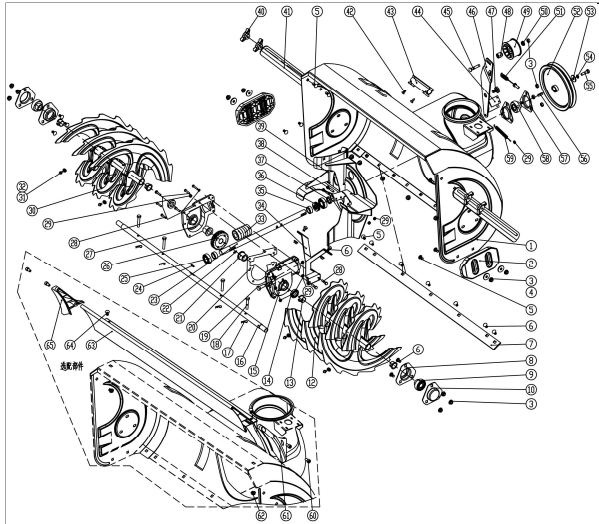
Kilereimer utkast	4LXP960
Kilereim fremdrift	37x132BE
Brytepinner	8x40



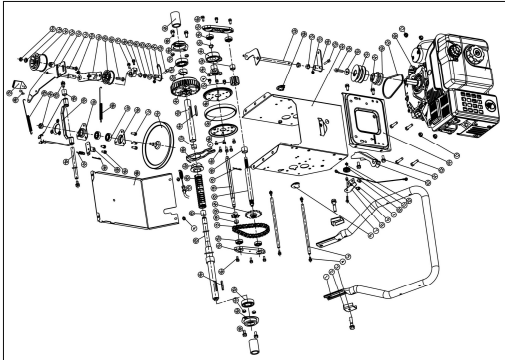
NO.	Part No.	Part name (Chinese)	Part Name (English)	QTY
1	GB/T 6183.1-2000	法兰面锁紧螺母M8	jam nut M8	9
2	KC55-10	直角万向节	right gimbal	1
3	GB/T 6171-2000	六角螺母细牙M8X1	nut M8x1	1
4	KC26-04A	挡位连杆	gear connector bar	1
5	KC30-05	扶手铝垫片	armrest pads	2
6	GB/T12-1988	半圆头方颈螺栓 M8X75	bolt M8x75	4
7	GB/T9074.17-1994	六角头组合螺栓M6X16	bolt M6x16	4
8	KC30A-04A	皮带罩	belt cover	1
9	KC90-12	皮带档杆	belt rod	1
10	GB/T 5780-2000	六角头螺栓 M8X25	bolt M8x25	1
11	GB/T96.1-2002	大垫圈 8	big washer8	1
12	KC42A-03	出雪口组件	chute assemble	1
13	KC55-24	雪锹	shovel	1
14	KC55-15	斜齿支架垫圈	bracket washer	1
15	KC26-11	长垫圈	long pad	1
16	KC26-14	空心蜗杆	hollow worm	1
17	KC26-12	芯棒	core shaft	1
18	KC26-15	下连接管	lower connecting pipe	1
19	GB/T879-2000	弹性圆柱销3*10	cylindrical pin 3*10	1
20	KC26-13	出雪口垫圈	chute washer	1
21	KC26-10	旋转铝架	rotating aluminum braket	1
22	GB/T93-1987	弹性垫圈 6	spring washer6	6
23	KC55-23	出雪口固定块	fixed block	3
24	GB/T818-2000	十字槽盘头螺钉M6X16	Screw M6x16	6
25	4LXP945	三角皮带	Belt	2



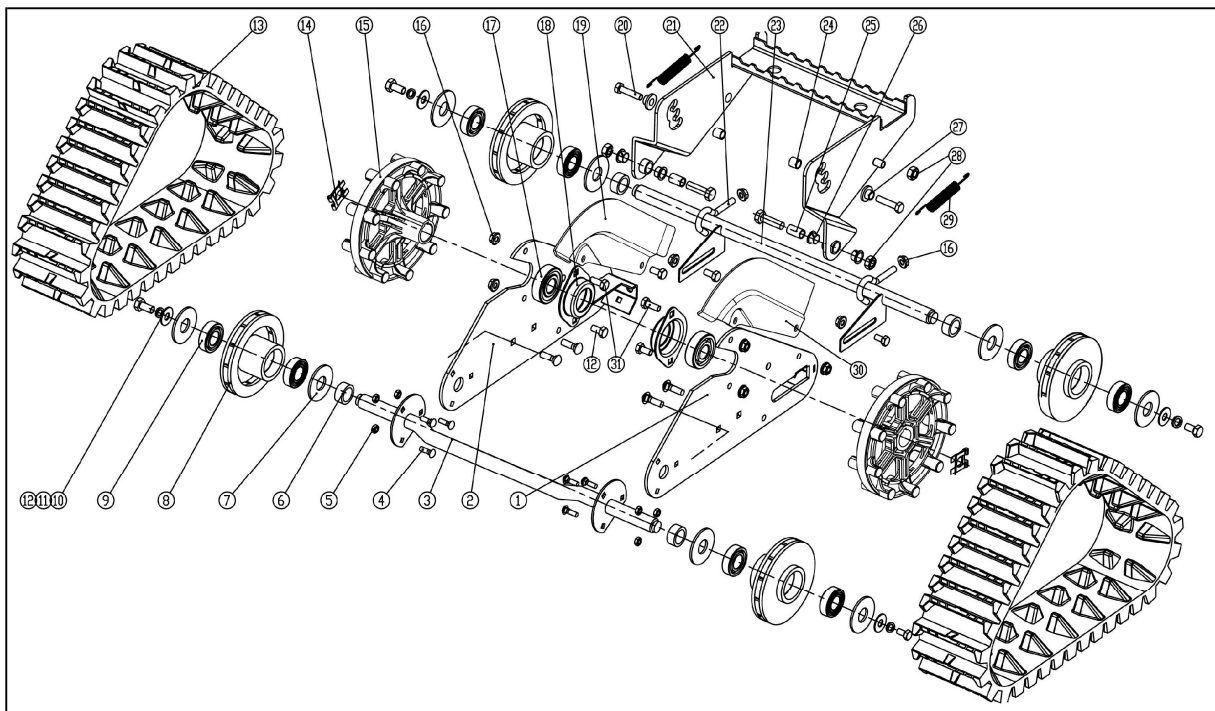
NO.	Part No.	Part name (Chinese)	Part Name (English)	QTY
1	GB/T846-1985	十字槽沉头自攻螺钉ST3.5X16F	bolt ST3.5X16F	2
2	KC30-03-01	上扶手	upper handle	2
3	KC30-03-02	G面板手控	panel	1
4	GB/T6183.1-2000	非金属嵌件六角法兰面螺母M8	hex flange nut M8	7
5	GB/T12-1988	半圆头方颈螺栓M8X40	carriage boltM8X40	4
6	KC30-03-03A	弹簧座	spring base	2
7	KCM24-03C-1	长拉线	long pull wire	2
8	GB/T12-1988	半圆头方颈螺栓 M8X35	carriage boltM8X35	2
9	S03*00493	B型销φ1.5X25	B pin φ1.5X25	4
10	KC30-03-09	行走手柄杆	gear handle bar	1
11	GB/T41-2000	六角螺母M10	hex nut M10	2
12	KC30-03-10A	档位手柄	gear handle	2
13	KC30-03-11GGP	出雪帽手柄杆	chute cap control handle	1
14	KC55-03-15	橡胶垫	rubber pad	2
15	KC55-03-17	手柄弹簧	handle spring	2
16	KC30-03-12A	右手柄	control pad,right	1
17	GB/T5287-2002	特大垫圈 8	jumbo washer8	1
18	GB/T 70.1-1985	内六角圆柱头螺钉 M8X120	screwsM8X20	1
19	GB/T 889.1-2000	六角锁紧螺母M8	hex locking nut M8	1
20	KC55-03-12	止动件	stopper part	1
21	KC55-03-23	单圈弹簧夹	individual pinchcock	2
22	KC55-03-25A	右凸轮	cam,right	1
23	KC55-03-13A	左凸轮	cam,left	1
24	KC55-03-11	止动拉簧	stopper spring	1
25	GB/T 70.1-1985	内六角圆柱头螺钉 M8X60	screws M8X60	1
26	GB/T 12618-1990	开口型扁圆头抽芯铆钉3X8	rivets3X8	2
27	KC90-04-04	电热手柄	heated handle	2
28	KC30-03-13A	左手柄	control pad,right	1
29	KC55-03-05-6	短套	short bush	2
30	KC30-03-14	输入电线	input wire	1
31	ASW-07D	拨动开关	switch	2
32	GB/T879-2000	弹性圆柱销3X12	spring pin3X12	1
33	KC30A-05-4	出雪口拉线	chute pull wire	1
34	KC55-03-04	预紧弹簧	spring	1
35	KCW-01	单片式收尾扣帽8	hat piece 8	1
36	KC30-03-19	旋转手柄	rotation handle	1
37	KC30-03-20A	小摇杆	rotator connector	1
38	KC30-03-21A	摇杆上固定座	upper fixed seat for rotation handle	1
39	KC30-03-28	上连接管	upper connector rod	1
40	KC30-03-23	摇杆下固定座	lower fixed seat for rotation handle	1
41	KC30-03-22A	软轴组件	flexible shaft assembly	2
42	GB/T 818-2000	十字槽盘头螺钉 M6X10	screw M6X10	2
43	GB/T95-2002	平垫圈 6	washer 6	2
44	KC30-03-24A	面板	panel	1
45	GB/T 9074.17	六角头螺栓组合件M6X16	hex bolt M6X16	2
46	KC30-03-26	罩板	cover plate	1
47	GB/T 889.1-2000	非金属嵌件锁紧螺母M6	nut M6	2
48	KC21-03-15	长条灯	LED light	1



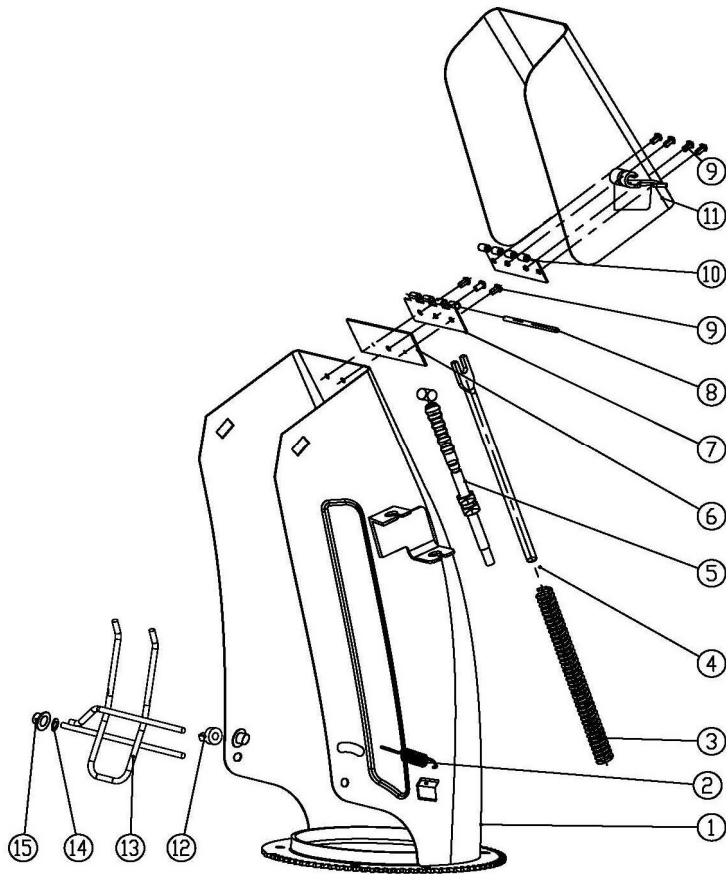
NO.	Part No.	Part name (Chinese)	Part Name (English)	QTY
1	KC34-01-01	大罩壳组件	housing assemble	1
2	KC55-01-02	滑梯	skid shoe	2
3	GB/T 6183.1-2000	非金属嵌件六角法兰面螺母M8	nut M8	24
4	GB/T96.2-2002	大垫圈8	washer 8	4
5	GB/T12-1988	半圆头方颈螺栓 M8X20	bolt M8x20	4
6	GB/T12-1988	半圆头方颈螺栓M8X18	bolt M8x18	15
7	KC34-01-02	34寸长挡板	shave plate	1
8	KC42-01-04	轴承盖	bearing cover	4
9	GB/T7810-1995	外球面轴承SB205	bearing SB205	2
10	KC42-01-05	密封轴承座	bearing seat	2
12	KC34-01-03	右蛟龙	right auger	1
13	KC42-01-07	驱动小套	bushing	4
14	GB13871-1993	FW外露骨架密封圈25X35X7	FW sealing ring 25x35x7	2
15	KC42-01-08	右蜗轮箱	right worm housing	1
16	KC34-01-04	输出轴	output shaft	1
17	KC55-29	单圈弹簧夹	B pinchcock	4
18	KC42-01-10	安全螺栓	safety bolt	4
19	GB/T 5780-2000	六角头法兰面螺栓M10X10	bolt M10x10	1
20	KC42-01-11	纸垫	paper washer	1
21	KC42-01-12	输出轴套(φ25)	shaft sleeve φ25	2
22	GB/T1096-1979	平键A6X6X18	flat key A6x6x18	1
23	KC42-01-13	蜗杆轴	worm shaft	1
24	GB/T1096-1979	平键A8X7X25	flat key A8x7x25	1
25	GB/T276-1994	深沟球轴承6004	ball bearing 6004	2
26	KC42-01-14	蜗轮	worm gear	1
27	KC42-01-15	左蜗轮箱	left worm housing	1
28	GB/T 5780-2000	六角头螺栓 M6X30	bolt M6x30	10
29	GB/T 889.1-2000	非金属嵌件锁紧螺母M6	jam nut M6	12
30	KC34-01-05	左蛟龙	left auger	1
31	JB/T 7940.1-1995	直通式压注油杯M6	oil cup M6	4
32	GB/T95-2002	平垫圈 6	flat washer 6	4
33	KC42-01-17	蜗杆	worm shaft	1
34	KC90-01-06A	支架	strut plate	1
35	KC42-01-18	蜗杆轴套	shaft sleeve	2
36	GB/T301-1995	单向推力球轴承51104	ball bearing 51104	1
37	GB13871-1993	内包骨架密封圈20X35X7	sealing ring 20x35x7	1
38	GB/T 5780-2000	六角头螺栓 M6X35	bolt M6x35	2
39	KC42-01-19	风扇	fan	1
40	KC55-25	塑料螺母(可选)	plastic nut (optional)	4
41	KC26-01-06	大罩壳支杆(可选)	support bar (optional)	2
42	GB/T 845-1985	十字槽盘头自攻螺钉 ST4.2X9	screw ST4.2x9.5-F	2
43	KC55-01-21	雪铲架	shovel support	1
44	KC90-01-18	刹车板	brake plate	1
45	GB/T12-1988	半圆头方颈螺栓M8X45	bolt M8x45	1
46	KC90-01-10	固定板	fixing plate	1
47	KC90-01-12	六角螺钉	screw	1
48	KC55-01-24	垫套	bushing	1
49	KC55-01-27	大张紧轮	big tension pulley	1
50	KC55-01-26	垫衬	pad	1
51	KC55-01-28	蛟龙拉线	auger cable	1
52	KC90-01-11	皮带轮	belt pulley	1
53	GB/T5287-2002	特大垫圈10	washer 10	1
54	GB/T93-1987	弹性垫圈 10	elastic washer 10	1
55	GB/T 5780-2000	六角头螺栓 M10X25	bolt M10x25	1
56	GB/T1096-1979	A型平键6X20	A flat key 6x20	1
57	KC42-01-20	轴承盖	bearing cover	2
58	SB204	球面单面宽深沟球轴承	ball bearing	1
59	KC55-02-19	弹簧3	spring 3	1
60	GB/T70.1-1985	内六角圆柱头螺钉(可选)	screw (optional)	4
61	KC26-01-09	加高板右侧盖(可选)	right cover for higher panel (opt)	1
62	GB/T 6183.1-2000	六角法兰面锁紧螺母M8(可选)	jam nut M8 (optional)	2
63	KC34-01-06	加高板(可选)	higher panel (optional)	1
64	GB/T12-1988	半圆头方颈螺栓M8X20(可选)	bolt M8x20 (optional)	2
65	KC26-01-11	加高板左侧盖(可选)	left cover for higher panel (opt)	1



NO.	Part No.	Part Name (Chinese)	Part Name (English)	QTY
1	KC90-02-21A	扶手	handlebar	1
2	KC55-02-25A	扶手连接板	handle connecting plate	2
3	GB/T9074.17-1988:M10X45	六角组合螺栓M10X45	Bolt M10x45	2
4	GB/T9074.17-1988: M6x12	六角组合螺栓M6X12	Bolt M6x12	14
5	KC55-02-40	支撑杆	strut	2
6	KC30A-02T-01	盖子2	cover 2	1
7	GB/T5780-2000:M6x20	六角螺栓M6X20	bolt M6x20	1
8	KCM24-02C-19	滑轮座	pulley seat	1
9	KC21-02-2	小轴套	small shaft sleeve	1
10	KC21-02C-01	短拉线	short wire	1
11	KC40-28	滑轮	pulley	1
12	GB/T899.1-2000:M6	六角锁紧螺母M6	jam nut M6	3
13	KC30A-02-02	连接板	connecting plate	1
14	GB/T9074.17-1988:M8x20	六角组合螺栓M8X20	bolt M8x20	4
15	GB/T5780-2000:M8x35	六角头螺栓M8X35	bolt M8X35	4
16	KC21-02C-03	发动机座	engine seat	1
17	GB/T6183.1-2000:M8	六角法兰面锁紧螺母M8	jam nut M8	4
18	LC170FDS	汽油机	engine	1
19	3LXP820	三角皮带	belt	1
20	KC30A-02-03	主动轮1	drive wheel 1	1
21	KC90-02-16	主动轮2	drive wheel 2	1
22	GB/T5287-2002:8	特大垫圈8	super washer 8	1
23	GB/T5786-2000:M8x1x30	六角螺栓M8X1X30	bolt M8X1X30	1
24	KC30A-02-04	箱体组件	transmission box assembly	1
25	GB/T5780-2000:M6x30	六角头螺栓M6X30	bolt M6X30	2
26	KC30-02-12	换挡接头	shift connector	1
27	KC90-02-07	塑料轴套	plastic sleeve	3
28	KC30A-02T-02	盖子3	cover 3	1
29	KC55-02-05	拨叉	shift fork	1
30	GB/T9074.17-1988:M6X16	六角组合螺栓M6X16	bolt M6X16	13
31	KC30A-02-05	轴承座	bearing seat	2
32	GB/T276-1997:6200	深沟球轴承6200	ball bearing 6200	4
33	GB/T894.1-1986:25	轴用弹性挡圈25	circlip 25	1
34	KC21-02-13	拨动轴承	shift bearing	1
35	KC30A-02-06	轴套15X20X15	sleeve 15x20x15	1
36	KC21-02-12	橡胶轮座	rubber wheel seat	1
37	KC30A-02-07	小齿轮	small gear	1
38	KC21-02-11-1	橡胶轮内圈	inner ring of rubber wheel	2
39	KC55-02-15-2	变速橡胶圈	rubber wheel	1
40	KC30A-02-08	轴套18X23X18	sleeve 18x23x18	1
41	KC55-29	弹簧夹	spring clip	1
42	KC30A-02-9	六角轴	hexagon shaft	1
43	KC30A-02-10-2	过渡轴	transit shaft	1
44	KC30A-02T-3	履带链轮	chain wheel	1
45	KC30A-02-11	小链轮	small chain wheel	1
46	KC30A-02-12	轴套12X15X8	sleeve 12x15x8	1
47	GB/T1243-1997:085-26	滚子链条085-26节	chain 085-26	1
48	GB/T5780-2000:M8x20	六角头螺栓M8X20	bolt M8x20	4
49	KC30-02-16A	履带驱动轴套	drive shaft sleeve	2
50	KC90-02-11	异形轴承座	bearing seat	2
51	GB/T899.1-2000:M8	六角锁紧螺母M8	jam nut M8	6
52	GB/T276-1997:6205	深沟球轴承6205	ball bearing 6205	2
53	KC30A-02-14	轴套25X34X16	shaft sleeve 25x34x16	1
54	KC30A-02-15	差速器	differential system	1
55	KC30A-02-16	短半轴	short semi-shaft	1
56	GB/T1095-2003:6X4X45	平键6X4X45	flat key 6x4x45	2
57	KC30A-02-17	铜套1	bronze sleeve 1	1
58	KC30A-02-18	拨叉板	fork	1
59	KC30-02-07	副离合件	auxiliary differential part	1
60	KC30-02-05	大弹簧	big spring	1
61	KC30-02-06A	离合拉线	differential cable	1
62	KC30A-02-19	铜套2	bronze sleeve 2	1
63	KC30A-02-20	长轴	long shaft	1
64	KCM24-02C-18	张紧接头	tension connector	1
65	GB/T848-2002:φ12	平垫圈φ12	flat washer:φ12	1
66	GB/T955-1987:φ12	波形弹簧垫圈φ12	spring washer φ12	1
67	KC21-02C-09	固定块	fixing block	1
68	GB/T5780-2000:M8x30	六角头螺栓M8X30	bolt M8X30	1
69	KC55-02-21	小张紧轮	small tension pulley	1
70	KC21-02C-10	小张紧板	small tension plate	1
71	GB/T12-1988:M8x40	半圆头方颈螺栓M8X40	bolt M8X40	1
72	KC30A-02-22	大张紧组合件	big tension combination	1
73	KC55-01-24	衬套	bushing	1
74	KC55-01-27	大张紧轮	big tension pulley	1
75	KC55-01-26	垫衬	pad	1
76	KC21-02C-13	皮带轮	belt pulley	1
77	GB/T9074.17-1988:M6x20	六角组合螺栓M6X20	bolt M6x20	3
78	KC90-02-12	三角轴承座	delta bearing seat	2
79	GB/T276-1997:6002	深沟球轴承6002	ball bearing 6002	2
80	KC90-02-15	弹簧	spring	1
81	KC30A-02-23	摩擦盘支架	support for friction disc	1
82	KC30A-02-24	轴套13X20X20	sleeve 13x20x20	1
83	GB/T9074.17-1988:M8x16	六角组合螺栓M8X16	bolt M8X16	2
84	GB/T899.1-2000:M12	六角锁紧螺母M12	jam nut M12	1
85	KC21-02C-12	刹车弹簧	brake spring	1
86	GB/T 109-1986:4x10	平头铆钉 4×10	rivet 4x10	2
87	KC30A-02-25	刹车板	brake block	1
88	KC30A-02-26	箱体底板	bottom plate for transmission	1
89	KC30A-02-27	定位件	position part	1
90	S03'00493	B型销φ1.5X25	B Pin:φ1.5X25	1
91	KCM24-02C-09	复位弹簧	reset spring	1
92	KC90-02-31	支撑杆	strut	1



1	KC90-03-01A	左履带轮支板	pedrail bracket,left	1
2	KC90-03-02A	右履带轮支板	pedrail bracket,right	1
3	KC90-03-03A	履带前轴	front pedrail shaft	1
4	GB/T12-1988; M6X16	半圆头方颈螺栓 M6X16	bolt M6x16	14
5	GB/T 889.1-2000; M6	非金属嵌件六角锁紧螺母M6	jam nut M6	14
6	KC90-03-04	轴套	shaft bushing	4
7	KC90-03-05	大垫片	big washer	8
8	KC90-03-06	惰轮	idler pulley	4
9	6004-2RS	深沟球轴承	ball bearing 6004-2RS	8
10	GB/T5287-2002; 8	特大垫圈 8	washer 8	4
11	GB/T93-1987; 8	弹性垫圈 8	spring washer 8	4
12	GB/T 5780-2000; M8X15	六角头螺栓 M8X15	bolt M8x15	8
13	XL-A	履带	pedrail	2
14	KC90.03-07	弹性档片	clip	2
15	KC90-03-08A	履带轮	pedrail pulley	2
16	GB/T 6183.1-2000; M8	六角法兰面锁紧螺母M8	jam nut M8	14
17	6205-2RS	深沟球轴承	ball bearing 6205-2RS	2
18	KC90-02-11	菱形轴承座	rhombus bearing seat	2
19	KC90-03-18	履带档板左	left plate for rubber track	1
20	GB/T 5780-2000; M10X40	六角头螺栓 M10X40	bolt M10x40	
21	KC90-03-10A	脚踏组件	pedal assemble	1
22	KC90.03-11	钩子	hook	2
23	KC90-03-12	履带后轴	rear axle for pedrail	1
24	KC90-03-16	垫套	bushing	2
25	KC90-03-13	中间套	bushing,middle	
26	KC90-02-07	塑料轴套	plastic bushing	4
27	KC90-03-14	衬垫	pad	6
28	GB/T 6183.1-2000; M10	非金属嵌件六角法兰面锁紧螺母M10	jam nut M10	4
29	KC90-03-15A	复位弹簧	reset spring	2
30	KC90-03-19	履带档板右	right plate for rubber track	1
31	GB/T 5780-2000; M8X20	六角头螺栓 M8X20	bolt M8x20	2



NO.	Part No.	Part Name (Chinese)	Part Name (English)	QTY
1	KC30A-05-1	出雪口焊合	chute welding	1
2	KC55-03-17	手柄弹簧2	handle spring2	1
3	KC30A-05-2	出雪口弹簧	chute sping	1
4	KC30A-05-3	支杆	strut	1
5	KC30A-05-4	出雪口拉线	chute pull wire	1
6	KC30A-05-5	密封片	seal piec	1
7	KC30A-05-6	下铰链	upper hinge	1
8	KC30A-05-7	铰链轴	hinge shaft	1
9	GB\T12618-1990	开口型扁圆头抽芯铆钉4X10	rivet 4X10	7
10	KC30A-05-8	上铰链	upper hinge	1
11	KC30A-05-9	出雪口帽焊合	chute cap welding	1
12	KC21-23	栅栏垫圈	washer	1
13	KC30A-05-10	安全栅栏	safty fence	1
14	KC55-26	塑料垫片	plastic washer	1
15	KCW-03	单片式收尾扣帽6	cap 6	2