

# 13HK



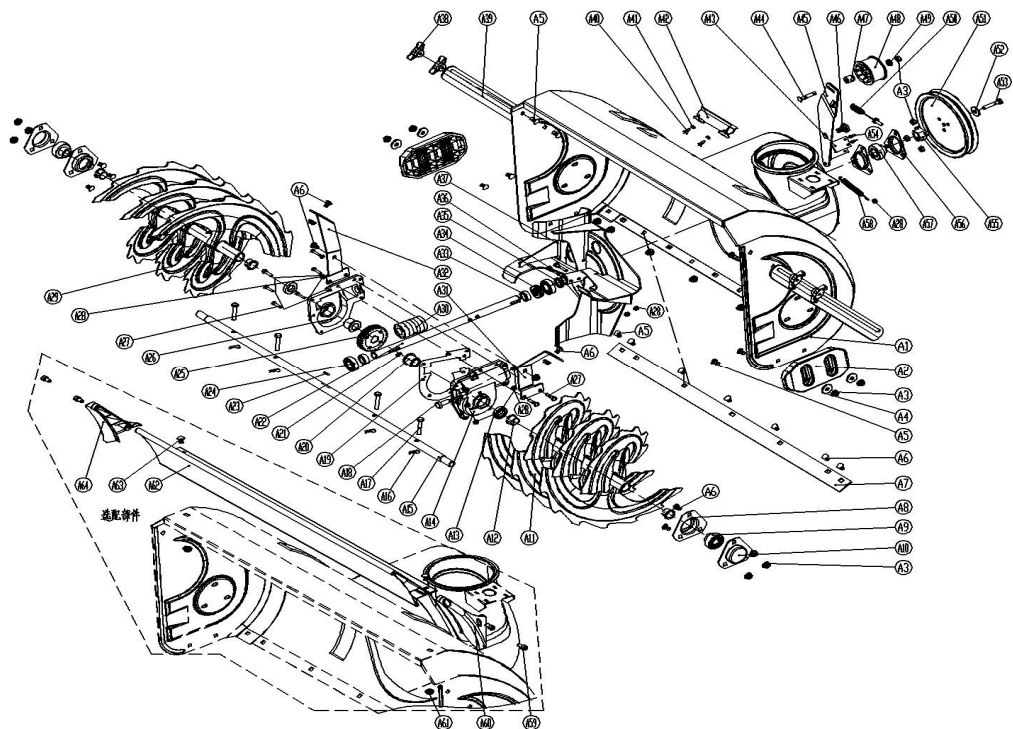
 **LONGCIN**

 **GARDENPRO®**

GardenPro Årsmodell 2013-2016

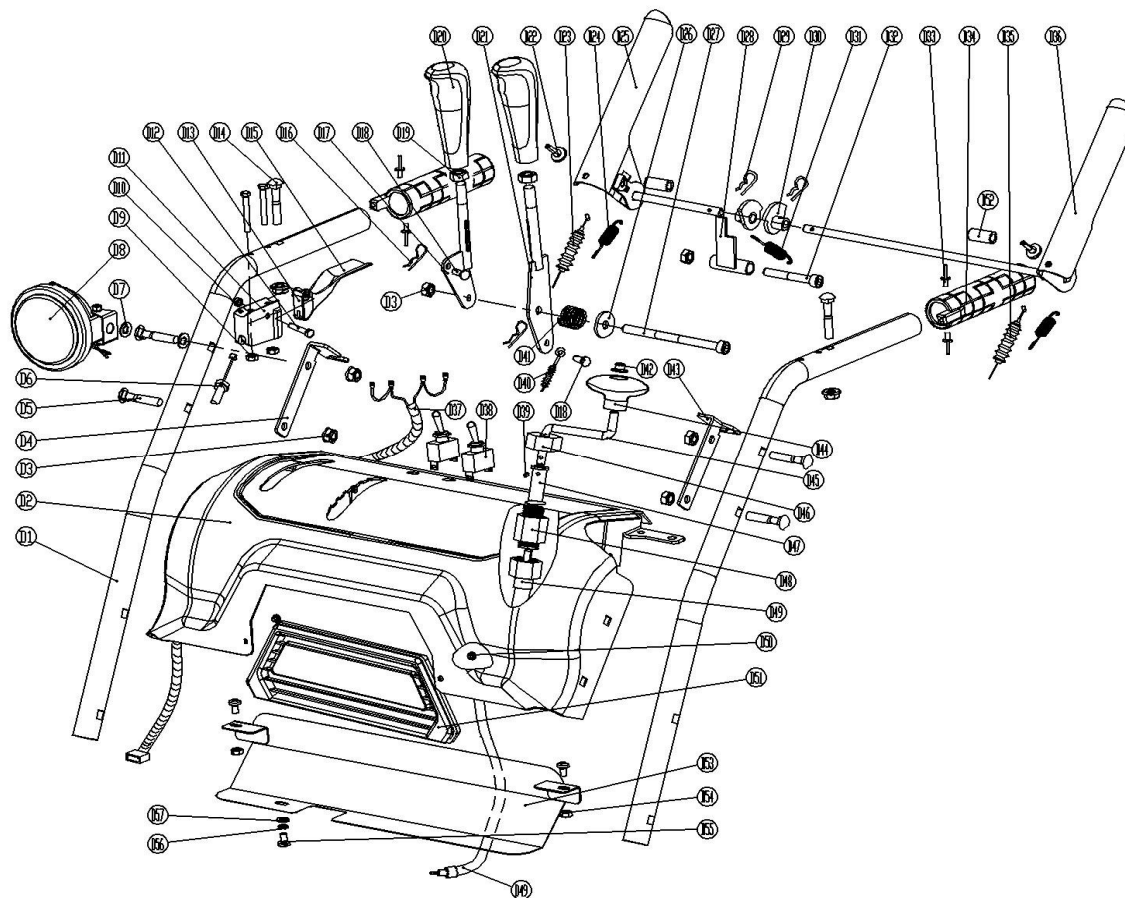
**INBAO.no**

Kilereimer utkast	4LXP960
Kilereim fremdrift	37x132BE
Brytepinner	8x40

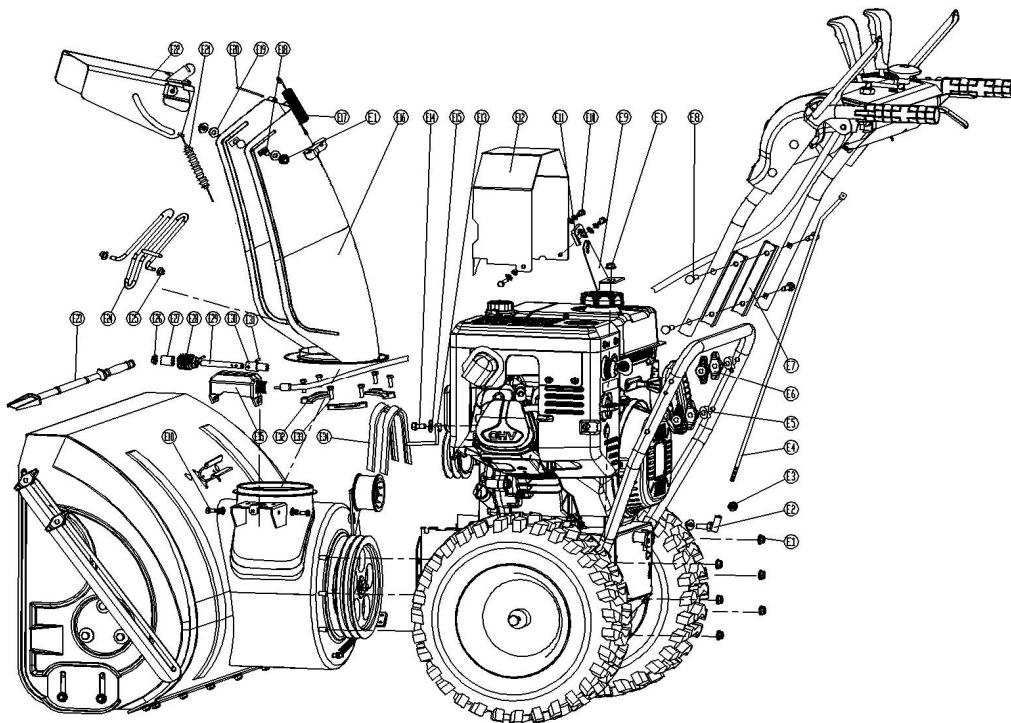


序号	名称	Name	
A1	KC34-01-01	Housing assenly	
A2	KC42-01-02	Slide shoe	
A3	GB/T 6183.1-2000	Hexagon flange nut with nmental insert M8	
A4	GB/T96.2-2002	Big washer 8	
A5	GB/T12-1988	Carriage bolt M8X20	
A6	GB/T12-1988	Carriage bolt M8X16	
A7	KC34-01-02	34° shave plate	
A8	KC42-01-04	Bearing seat	
A9	GB/T7810-1995	Ball bearing	
A10	KC42-01-05	Sealed bearing seat	
A11	KC34-01-03	Auger right	
A12	KC42-01-07	Small bushing	
A13	GB13871-1993	Frame work sealing ring 25X35X5	
A14	KC42-01-08	Worm housing right	
A15	KC34-01-04	Output shaft	
A16	KC55-29	Single coil spring clip	
A17	KC42-01-10	Safety bolt	
A18	GB/T 5780-2000	Hexagon head flange bolt M10X10	
A19	KC42-01-11	Paper pad	
A20	KC42-01-12	Output shaft sleeve (3/8C25)	
A21	GB/T1096-1979	Parallel key A6X6X18	
A22	KC42-01-13	Worm shaft	
A23	GB/T1096-1979	Parallel key A8X7X25	
A24	GB/T226-1994	Bearing 6004	
A25	KC42-01-14	Gear	
A26	KC42-01-15	Worm gear	
A27	GB/T 5780-2000	Worm housing left	
A28	GB/T 889.1-2000	Hexagon nut with nmental insertM6	
A29	GB/T 889.1-2000	Hexagon nut with nmental insertM6	
A30	KC42-01-17	Worm	
A31	KC90-01-06	Bracket right	
A32	KC90-01-07	Bracket left	
A33	KC42-01-18	Worm shaft sleeve	
A34	GB/T301-1995	Thrust ball bearing 51104	
A35	GB13871-1993	Seal ring 20X35X7	
A36	GB/T 5780-2000	Hexagon head bolt M6X35	
A37	KC42-01-19	Fan	
A38	KC55-25	Plastic nut	
A39	KC26-01-06	Housing strut	
A40	GB/T 845-1985	Cross recessed pan head tapping screws ST4.2X12-F	
A41	GB/T95-2002	Flat washer 6	
A42	KC55-01-21	Bracket for snow removal tool	
A43	KC90-01-18	Shave plate	
A44	GB/T12-1988	Carriage bolt M8X40	
A45	KC90-01-10	Fixed plate	
A46	KC90-01-12	Hexagon screw	
A47	KC55-01-24	Pad	
A48	KC55-01-27	Big tension pulley	
A49	KC55-01-26	Pad	
A50	KC55-01-28	Auger pull wire	
A51	KC90-01-11	Belt pulley	
A52	GB/T5287-2002	Jumbo washer	
A53	GB/T 5780-2000	Hexagon head bolt left M825	
A54	GB/T12618-1990	Open type blind rivetX10	
A55	KC26-01-08	Pulley shaft	
A56	KC42-01-20	Bearing cover	
A57	SR204	deep groove ball bearings	
A58	KC55-02-19	Spring3	
A59	GB/T70.1-1985	Hexagon socket screwM8X16	
A60	KC26-01-09	Right cover	
A61	GB/T 6183.1-2000	Hexagon flange lock nut M8	
A62	KC34-01-06	Higher panel	
A63	GB/T12-1988	Carriage bolt M8X20	
A64	KC26-01-11	Left cover	





D1	KC30-03-01	handle upper	D30	KC55-03-13	cam
D2	KC30-03-02	panel, manual	D31	KC55-03-11	stopping spring
D3	GB/T6183.1-2000	hex flange nut with nonmetal insert M8	D32	GB/T 70.1-1985	hex socket cap screw M8x60
D4	KC30-03	wire seat, right	D33	GB/T 12618-1990	open type blind rivet 3x8
D5	GB/T12-1988	carriage bolt M8x40	D34	KC90-04-04	heated handle
D6	KC30-02-06	clutch wire	D35	KC90-01-12	auger pull wire
D7	KC55-26	plastic pad	D36	KC30-03-13	handle, left
D8	KC30-03-04	light	D37	KC30-03-14	input wire
D9	GB/T889.1-2000	hex lock with with nonmetal insert M5	D38	HY64	arc switch
D10	GB/T889.1-2000	hex lock with with nonmetal insert M6	D39	GB/T 77-2000	hex screw M4x6
D11	KC30-03-05	clutch handle seat	D40	KC55-03-21	chute cap pull wire
D12	KC30-03-06	handle bolt	D41	KC55-03-04	pretighten spring
D13	GB/T5780-2000	hex head bolt M5x30	D42	KCW-01	monolithic closure cap 8
D14	GB/T12-1988	carriage bolt M8x35	D43	KC30-03-15	wire seat, leaft
D15	KC30-03-08	clutch handle	D44	KC30-03-19	rocker handle
D16	KC55-29	individual pen pinchcock	D45	KC30-03-20	small rocker
D17	KC30-03-09	gear control lever	D46	KC30-03-21	fixed seat of rocker
D18	KC55-03-06	pull wire bolt	D47	KC30-03-28	connecting tube, upper
D19	GB/T41-2000	hex nut M10	D48	KC30-03-23	flexible shaft
D20	KC30-03-10	regulation handle	D49	KC30-03-22	flexible shaft assembly
D21	KC30-03-11	chute cap handle	D50	GB/T 818-2000	cross recessed raised head bolt M6x8
D22	KC55-03-15	rubber pad	D51	KC30-03-24	panel
D23	KC90-04-02	moving pull wire	D52	KC30-03-25	spacer
D24	KC55-03-17	handling spring	D53	KC30-03-19	hosing
D25	KC30-03-12	handle, right	D54	GB/T 889.1-2000	lock nut with nonmetal insert M6
D26	GB/T5287-2002	jumbo washer 8	D55	GB/T 818-2000	cross recessed raised head bolt M6x12
D27	GB/T 70.1-1985	hex socket cap screw M8x120	D56	GB/T 93-1987	spring washer 6
D28	KC55-03-12	stopping part	D57	GB/T95-2002	flat washer
D29	KC55-03-23	individual pen pinchcock			



		English Name
E1	GB/T 6183. 1-2000	flange nut M8
E2	KC55-10	right angel gimbal
E3	GB/T 6171-2000	hexagon nut M8x1
E4	KC30-04	contacting rod
E5	KC55-04	plastic nut hosing
E6	KC55-25	plastic nut
E7	KC30-05	armrest pads
E8	GB/T12-1988	carriage bolt M8x75
E9	KC30-06	bracket
E10	GB/T9074. 17-1994	Combined head six hexagon boltM6X12
E11	KC26-16	support cap
E12	KC90-07	belt cover
E13	KC90-12	belt gear level
E15	GB/T96. 1-2002	big washer 8
E14	GB/T 5780-2000	hexagon head bolt M8x20
E16	KC42-03	chute assemble
E17	KC55-18	chute spring
E18	GB/T12-1988	carriage bolt M8x16
E19	KC55-26	plastic pad
E20	KC90-09	bolt
E21	KC55-03-21	chute cap pull wire
E22	KC90-10	chute cap assemble
E23	KC55-24	snow removal tool
E24	KC26-09	raid guard
E25	KCE-03	monolithic closure cap 6
E26	KC55-15	gear support washer
E27	KC26-11	Long washer
E28	KC30-14	hollow worm
E29	KC26-12	core rod
E30	KC26-15	connecting tube
E31	GB/T879-2000	Spring-type straight pins-Slotted
E32	KC42-4	fixed block
E33	GB/T818-2000	cross recessed raised head bolt M6x12
E34	V134960	Belt
E35	KC26-10	rotate